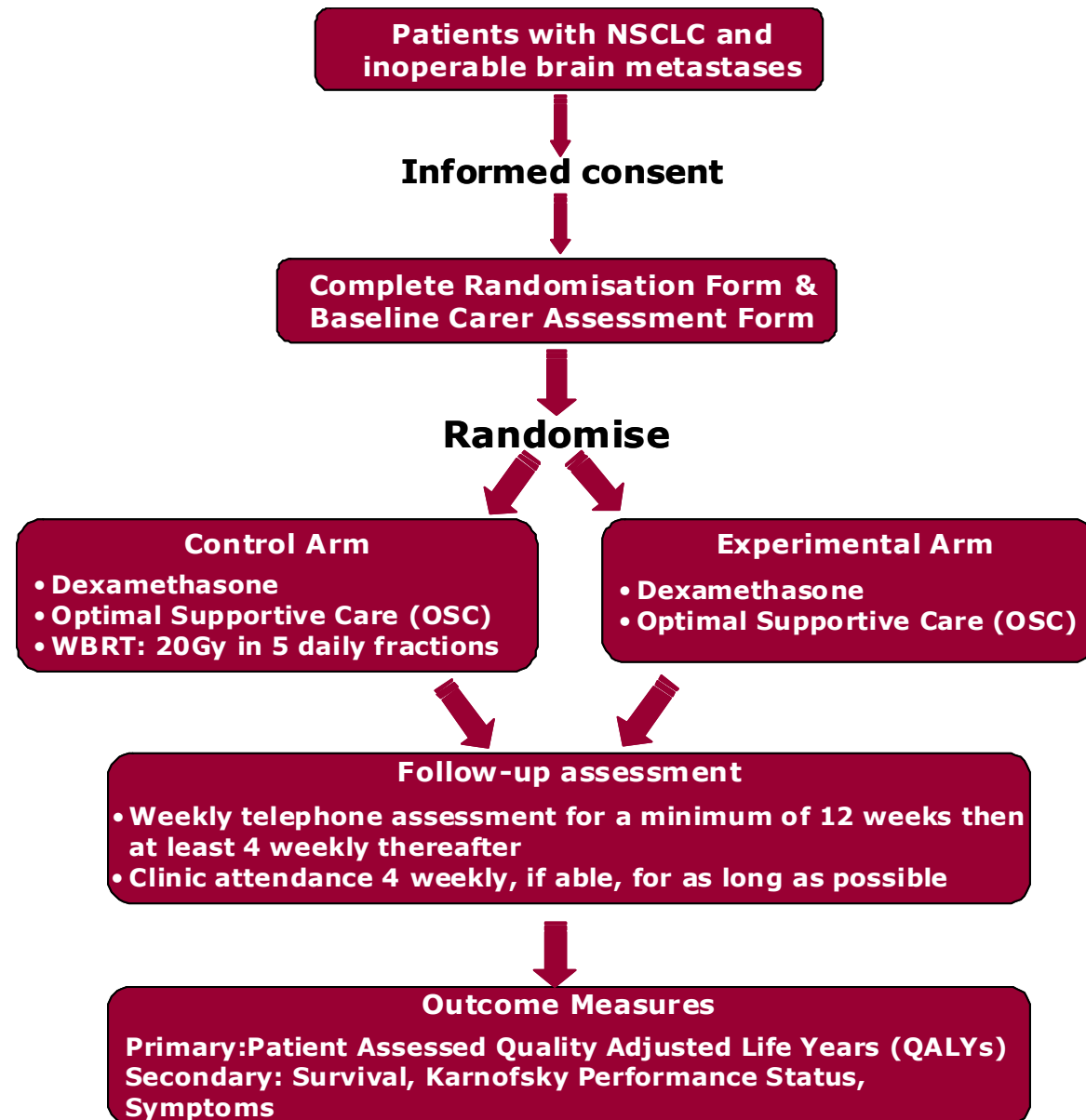


QUARTZ

Quality of Life After Treatment for Brain Metastases

Trial Design

- QUARTZ is a phase III randomised trial.
- It assesses whether treatment with optimal supportive care (OSC, including steroids) alone is non-inferior to treatment with OSC and whole brain radiotherapy (WBRT), for patients with inoperable brain metastases from NSCLC.
- The trial requires 534 patients to exclude a 1 week detriment in QALYs (Quality Adjusted Life Years) with OSC alone.



Interim Data Release



- The decision to release the interim results from the first 151 QUARTZ randomised patients, was in order to provide investigators with further evidence on which to base trial discussions with potential participants and other colleagues.
- This decision was made in light of the overwhelming support for the trial, but continued difficulties with recruitment.
- The trial requires a total of 534 patients, we cannot conclusively answer the trial questions with the interim data.
- It is important to guard against over-interpretation when viewing the interim results.

Baseline Data

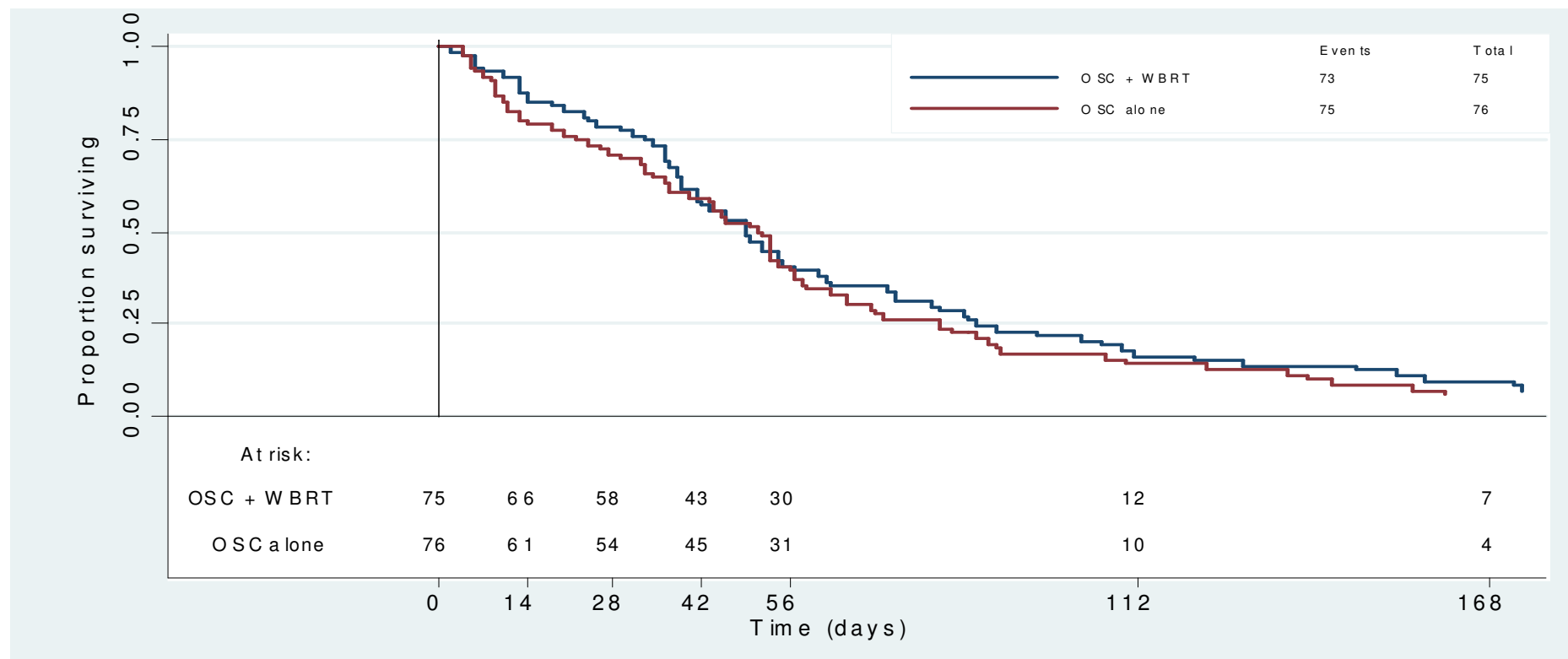
(N = 151)

Characteristics	Category	Patients
Sex	Male	91 (60%)
Age	Median (IQR)	67 (62 – 73)
Karnofsky PS	Poor (<70)	75 (50%)
Extra-cranial metastases	Yes	58 (38%)
RPA	I	12 (8%)
	II	64 (42%)
	III	75 (50%)
NSCLC histology	Adeno	53 (36%)
	Squamous	43 (29%)
Solitary brain metastasis	Yes	57 (39%)
Patient health	Good/Very good	56 (37%)

Delivery of WBRT

	N (%)
Patients randomised to WBRT arm	75
WBRT (starting within 2 weeks of randomisation, receiving 20Gy over no more than 8 days)	42 (56%)
WBRT starting within 3 weeks of randomisation, receiving 20Gy over no more than 10 days	12 (16%)
WBRT starting more than 3 weeks after randomisation, or receiving less than 20Gy, or taking over 10 days to complete WBRT	10 (13%)
WBRT not started	11 (15%)

Survival and QALYs**



Median survival:

7 wks (OSC+WBRT) vs. 7.3 wks (OSC alone)

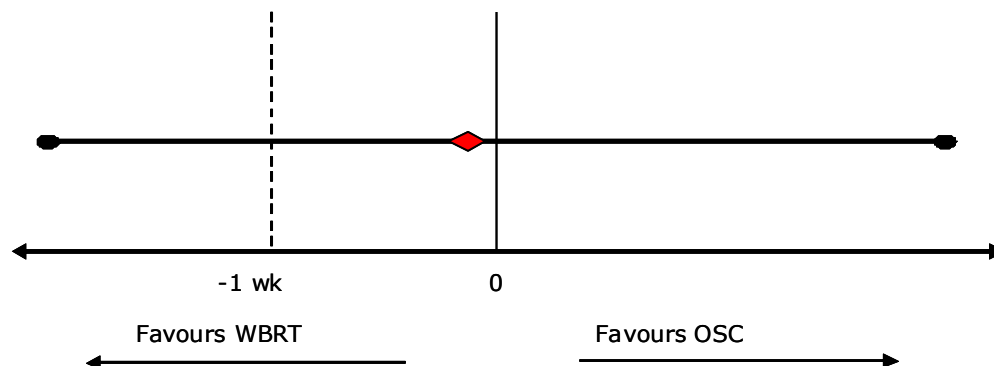
HR = 1.11 (95% CI (0.80, 1.53))

p-value = 0.542)

**A QALY (Quality Adjusted Life Years) is a measure of disease burden, including both the quality and the quantity of life lived

Survival and QALYs

Average QALY = 31 days
(OSC+WBRT) vs. 30 days (OSC alone)
95% CI for difference
(OSC alone - OSC+WBRT)
= (-12.0 days, 13.2 days)



These data are not conclusive, but do suggest that omitting WBRT is not detrimental, and support the need for QUARTZ to fully investigate the appropriate use of WBRT in patients with NSCLC and inoperable brain metastases.

QUARTZ

Quality of Life After Treatment for Brain Metastases